



Hopkinton Area Land Trust, Inc.  
25<sup>th</sup> Anniversary  
2020 Annual Meeting

September 23, 2020

7:00 PM

Zoom Virtual Meeting

# Agenda

- Short Introduction and around the room
- About the Trust & What we do
- Financial Reports
- Election/Re-election of three Directors
- Trust accomplishments
- Future Goals
- Q & A
- Adjournment





# About the Land Trust

Charter: Assist in acquiring and maintaining Hopkinton's open space and conservation land

- Standalone private corporation, not a part of town government, formed by town residents
- A Federal 501c(3) non-profit corporation and MA Chapter 180 non-profit since 1995
- Managed by 9-member volunteer board of directors from residents of Hopkinton and neighboring towns, assisted by volunteers for land stewards and maintenance and Boy and Girl Scout projects
- Budget is all through membership dues and donations

# The Trust's Mission

Preserve, protect, conserve, and enhance the natural resources within and around the town of Hopkinton, Massachusetts, including open spaces, water resources, marshlands, swamps, woodlands, underground water supplies, land use of historical significance and wildlife habitat, in order to maintain and improve the quality of life in the Town of Hopkinton for present and future generations.

Educate the public in the areas of conservation, ecology, forestry practices, wildlife preservation and land use planning in order to protect open space, plant and animal life.

Encourage and facilitate the use of land conservation, recreation and wildlife preservation by cooperating with the town of Hopkinton, its elected officials and committees, Hopkinton landowners and other individuals and organizations having similar purposes.

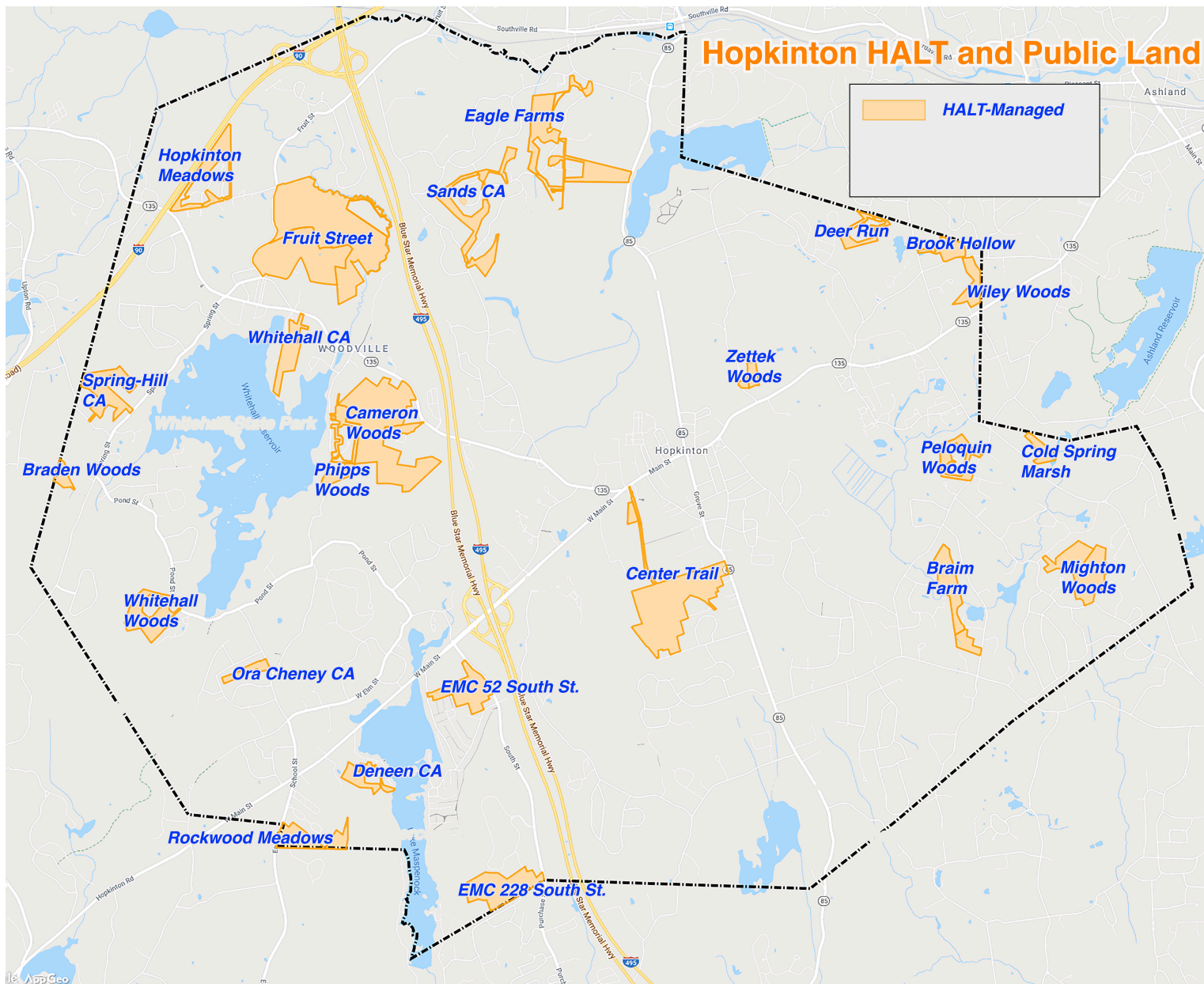
# “Land Trust” is a Thing

- A **private** nonprofit corporation whose mission is to conserve land
- Land is conserved in one of two ways (or both):
  - **Fee**: Donation of land to the trust through a deed; Trust is owner
  - **Conservation Restriction (CR)**: Landowner grants CR to the Trust
    - State authorizes and approves CRs
    - CR limits what can be done with the land; prohibits development
    - Land Trust enforces terms of CR
- 1667 Land Trusts in the U.S.
- Other nearby Land Trusts
  - Trustees of Reservations (the first one ever)
  - Sudbury Valley Trustees
  - Mass Audubon
  - Friends of Whitehall
  - Upper Charles Conservation Land Trust
  - Metacomet Land Trust
  - Numerous town-oriented trusts

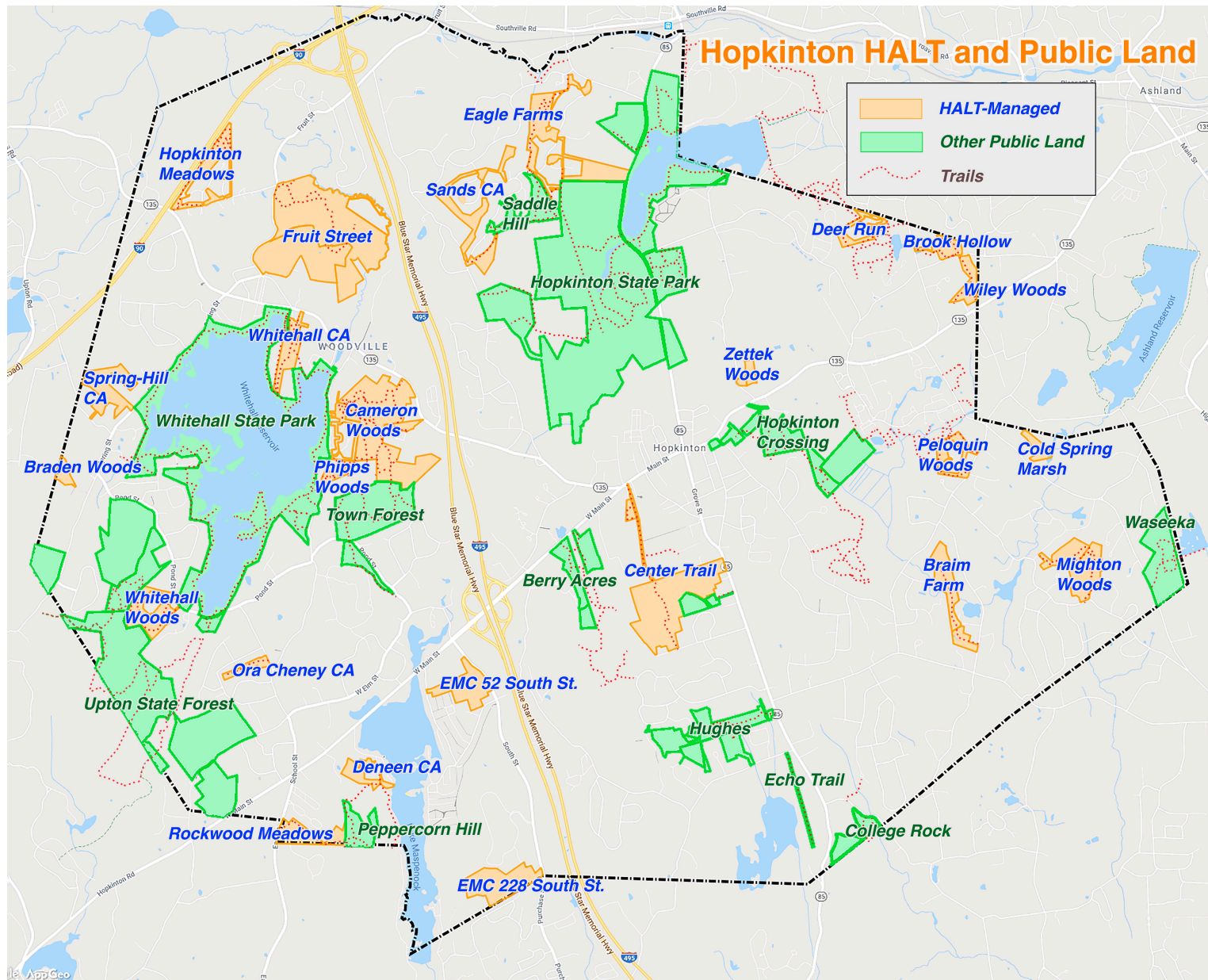
# HALT Fee and CR Land

- How acquired
  - Donations by private individuals
  - Donations by developers
    - Land in a subdivision that cannot be developed
    - 50% required open space in an OSLPD subdivision
    - Order of Conditions for some developments
  - Donation of CR by town
- Fee owned
  - 341 acres, 15 properties, 39 assessor parcels
- Conservation Restrictions
  - 514 acres, 12 properties, 15 assessor parcels
- In process or expected
  - 73 acres, 7 properties
- 20 Miles of Trails

**HALT-Managed**









# What HALT Does with Conservation Land

- Ensure land retains its conservation value
  - Clean up any existing problems
  - Prepare **baseline documentation** describing initial conditions of land
  - Monitor land at least yearly for encroachments or future problems that detract from conservation value
- Activities
  - Find and mark boundaries
  - Support public access (usually)
    - Build and maintain trails
    - Erect trailhead signs
    - Trail markers and interpretive signs



**Hopkinton Area Land Trust, Inc.**  
**Membership Activity Report**  
**FY 20 / FY 19**

		FY 2020		FY19	
		4/1/19 - 3/31/20		4/1/18 - 3/31/19	
	Yr/Yr Change	Quantity	\$ Amount	Quantity	\$ Amount
Number of Payments	53.4 % Incr.	89	//////////	58	//////////
Resident Members		112	\$ 12,424	76	\$ 9,600
Resident Donations		2	\$ 35		
<u>Other Organizations</u>					
LinQuest, Mathworks, Hopk Garden Club, Phipps Ins, Solect		5	\$ 2,400	3	\$ 1,600
Members total, net of paypal fee	50.6 % Incr.	119	\$ 14,859	79	\$ 11,200



**HOPKINTON AREA LAND TRUST, INC.**  
**SUMMARY OF STATEMENT OF ACTIVITIES**

in \$'s

**REVENUES:**

Contributions

Interest income

**TOTAL REVENUES**

**EXPENSES:**

Land Protection/stewardship

Fund raising

Administration

**TOTAL EXPENSES**

**CHANGE IN NET ASSETS**

**NET ASSETS, BEGIN OF YR**

**NET ASSETS, END OF YR**

FY 20 ending 3/31/20	FY 19 ending 3/31/19	FY 18 ending 3/31/18
17,815	\$ 11,200	\$ 9,535
1,890	1,008	379
19,705	12,208	9,914
8,414	8,983	3,707
1,564	1,073	2,056
2,786	2,203	2,548
12,764	12,259	8,311
6,941	(51)	1,603
\$ 109,194	\$ 109,245	\$ 107,642
\$ 116,135	\$ 109,194	\$ 109,245



# Hopkinton Area Land Trust

## Functional Expenses

### For the Year Ended March 31, 2020

	in Dollars
Stewardship	\$3,895
Bridges, signs, trails, supplies, equipment	2,449
Outreach	
Newsletter, brochure, events, ads	550
Dues	2,999
Website (setup & annual)	1,200
Accounting	1,038
Insurance	169
Office supplies	50
Contributions	414
Fees	\$12,764
TOTAL	



# Hopkinton Area Land Trust

## Statement of Financial Position

	<u>3/31/2020</u>	<u>3/31/2019</u>
Net Assets without Restrictions		
Operating    Checking	\$    2,261	\$    1,245
MMkt	<u>9,622</u>	<u>7,133</u>
Total Operating	11,883	8,378
 Stewardship fund -MMkt & CD's	 61,179	 60,108
 Total Without Restrictions		
Operating and Stewardship Fund	<u>73,062</u>	<u>68,486</u>
 With Restrictions - Stewardship fund (CD's)	 43,073	 42,348
 Total Assets	<u>\$116,135</u>	<u>\$110,834</u>

**Next: Annual Meeting Business**

**Election of Board of Director Seats**



# Hopkinton Area Land Trust Board of Director Nominee Slate

## Current Board Members and Terms

Nominees for Re-Election	Terms of Office	
	From	To
Edwin G. Brohm	9/17/2017	Sept 2020 Annual Meeting
Charles H. Dauchy	4/17/2019	Sept 2020 Annual Meeting
Barry Rosenbloom	9/17/2017	Sept 2020 Annual Meeting
Morrie Gasser	9/16/2018	Sept 2021 Annual Meeting
Mavis O'Leary	9/16/2018	Sept 2021 Annual Meeting
Kenneth Parker	9/16/2018	Sept 2021 Annual Meeting
Steve Frohbieter	9/25/2019	Sept 2022 Annual Meeting
Peter Barbieri (7/30/20)	9/25/2019	Sept 2022 Annual Meeting
Steve Levandosky	9/25/2019	Sept 2022 Annual Meeting



# What We've Accomplished in 25 Years

- 930 acres of open space owned, under conservation restriction or in process
- 20 Miles of trails that are actively used by the community
- Applied for seventeen and won sixteen grants for trail development, trail signage and trail repairs
- Geocaching program on trails and properties
- Increased Trust awareness through newsletters, advertisements, articles, events and a web site

# **2019-2020 Accomplishments**

## **Organizational Changes**

- Retirement of HALT's first president Dave Goldman, after 24 years
- Resignation of long-time director Jeff Furber
- Election of new president Morrie Gasser
- Election of new director Peter Barbieri
- Election of Director Emeritus David Goldman
- Growth of 47% in membership
- Addition of 5 new property stewards and active volunteers

# **2019-2020 Accomplishments**

## **Properties and Trails**

- **Cameron Woods**
  - Replacement bridges (Eagle Scout project)
  - New loop trail with high views
- **Center Trail**
  - CR extended to include Welzel Trail and Main St. entrance
- **Deneen Conservation Area**
  - New boardwalk across muddy area
- **Braim Farm**
  - Enabled public access trail from South Mill Street
  - Signed trails
  - Received CR on 4.9-acres at Valentine Circle (total 44.7 acres)
- **Eagle Farms/Sands/Highland Park**
  - Built 2 miles of new trails; longest loop in town of 4 miles

# **2019-2020 Accomplishments**

## **Properties and Trails (cont'd)**

- **Echo Trail**
  - Worked with surveyor in preparation for CR
- **Center Trail**
  - CR extended to include Welzel Trail and Main St. entrance
- **Fruit Street**
  - Extensive blowdown clearing
  - New trails flagged, ready to clear
- **Hopkinton Meadows**
  - Reopened neglected trail and built new loops
  - Replaced rotting bridge
  - Obtained approval for new boardwalks
- **Liberty Mutual/Frankland Road Solar Farm**
  - Fought to preserve trails
  - Special permit requires open space donation to land trust and payment for parking area

# **2019-2020 Accomplishments**

## **Properties and Trails (cont'd)**

- **Mighton Woods**
  - New boardwalks
  - Full boundary marking
  - New 1/2-mile trail allows 1-mile loop
- **Peloquin Woods**
  - Fund drive for cost of Marjorie Peloquin trailhead sign
  - 1/2-mile extension of trail
  - 60' boardwalk and several bridges
- **Rockwood Meadows**
  - Finalized agreements with HOA and Upton for property management
- **Whitehall Conservation Area**
  - Cleared invasives from meadow (town project)

# **2019-2020 Accomplishments Events**

- Birds of Prey “sold out” presentation at library
- Inaugural Trails Club walks at:
  - Rockwood Meadows
  - Pelouin Woods
  - Highland Park
- Trails Club Walks at:
  - Fruit Street
  - Cameron Woods

# 2019-2020 Accomplishments

## Outreach and Public Involvement

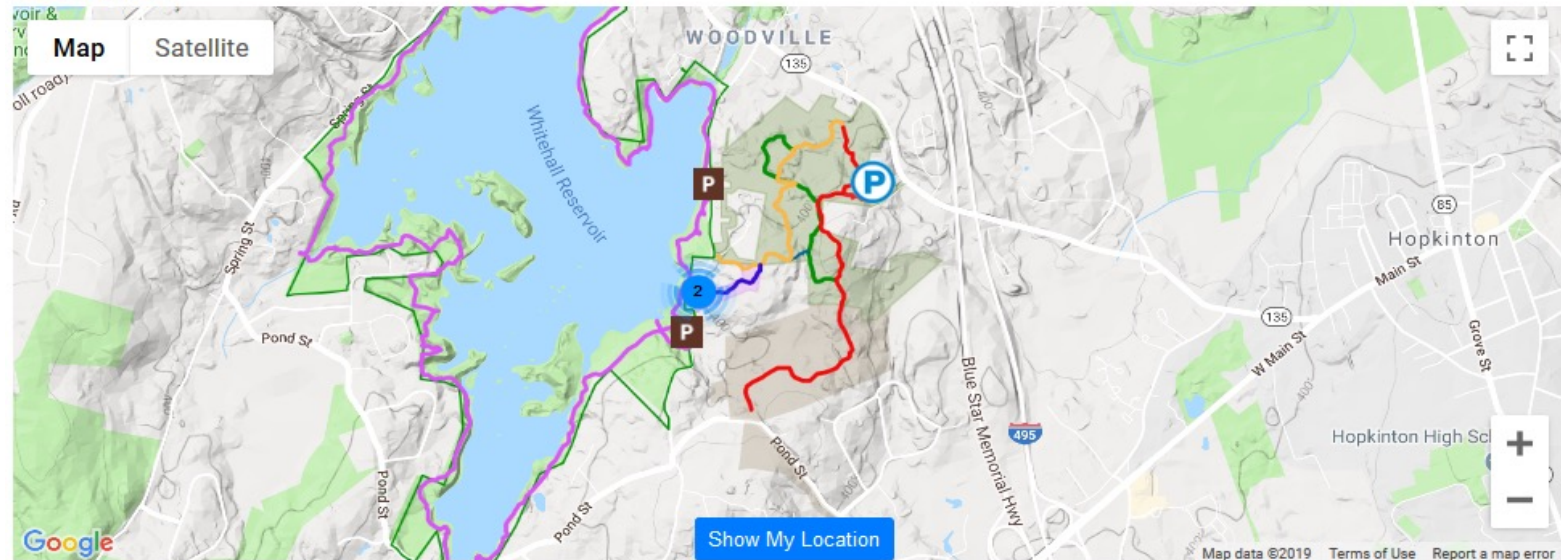
- Opened up trails to mountain biking
  - Met with New England Mountain Biking Association
- Open Space Preservation Commission assistance
  - Open space acquisition
  - Property monitoring and encroachment resolutions
- Trails Coordination and Management Committee assistance
- Upper Charles Trail Committee contributions
- Community Preservation Committee
  - Prior grants for 4 ongoing projects, 3 CRs and trails
- Conservation Commission
  - Preserving open space and trails at Frankland Road solar farm
  - Supported alternative weed management for Lake Maspenock
- Planning Board
  - Preserving open space and trails at Frankland Road solar farm
  - Preserving open space at Deer Ridge development
- Supported 2 Eagle Scout candidate projects



# Our New Website, Launched September 2019

## Cameron Woods

### Location



\*Show My Location\* requires a device, browser and security settings that support and allow location services. You may have to reload the map before updating your location.

[Reload Map](#)

### Map Legend

- Green Trail
- Red Trail
- Phipps Woods Trail
- Whitehall State Park Loop Trail
- Yellow Trail
- Cameron Woods
- Phipps Woods
- Whitehall State Park Boundary
- Hopkinton Town Forest

- Cameron Woods Parking and Whisper Way Trailhead
- Sylvan Way and Phipps Woods Trailheads
- Whitehall Trail Access and Parking



# Volunteers & Land Stewards

- Land work maintaining trails
- Assisting as a property Steward
- Share your knowledge with Nature as an event presenter
- Advocate for the Trust helping us spread the word:
  - Referrals to the website for info on properties available
- Please sign up with us as a land Steward or a volunteer to help with skills you would like to share.

# Land Steward Responsibilities

- Assigned to a Trust's Property to monitor
- Annual walk of the property's boundaries to observe for; encroachments of debris or construction, bench and bridge conditions, any safety threats such as Hunt Stand.
  - Complete a brief monitoring report of all observations of the condition of boundaries.
- Walking trail is monitored more frequently—at a minimum of twice annually to observe if trail is:
  - Safe, clean, clear of obstacles, downed trees.



# 2020-2021 Goals

- Continue to increase membership
- Continue to increase awareness
  - Hold events
  - Communicate through email
- New Geocaches
- Complete new boardwalks and bridges at Brook Hollow, Hopkinton Meadows, Fruit Street
- Receive open space at Frankland Road solar farm
- Continue working with town committees to support land acquisition



# Geocache Program

- What is Geocaching
  - Geocaching is an activity to find “Treasures”, in hidden containers using a GPS
  - Cache contains a log, and other trinkets that the finder can swap and leave a different one behind.
  - Finder signs the log and reports the find on [geocaching.com](http://geocaching.com)
- What and Why
  - The trust sponsors, registers and hides the geocache
  - Supports others to hide geocaches on HALT property
  - Encourages people to walk and enjoy the trails
- Where are sites
  - 14 locations across HALT-managed properties
  - Check our website and [geocaching.com](http://geocaching.com) for for locations

# Picture of Typical GeoCache Container

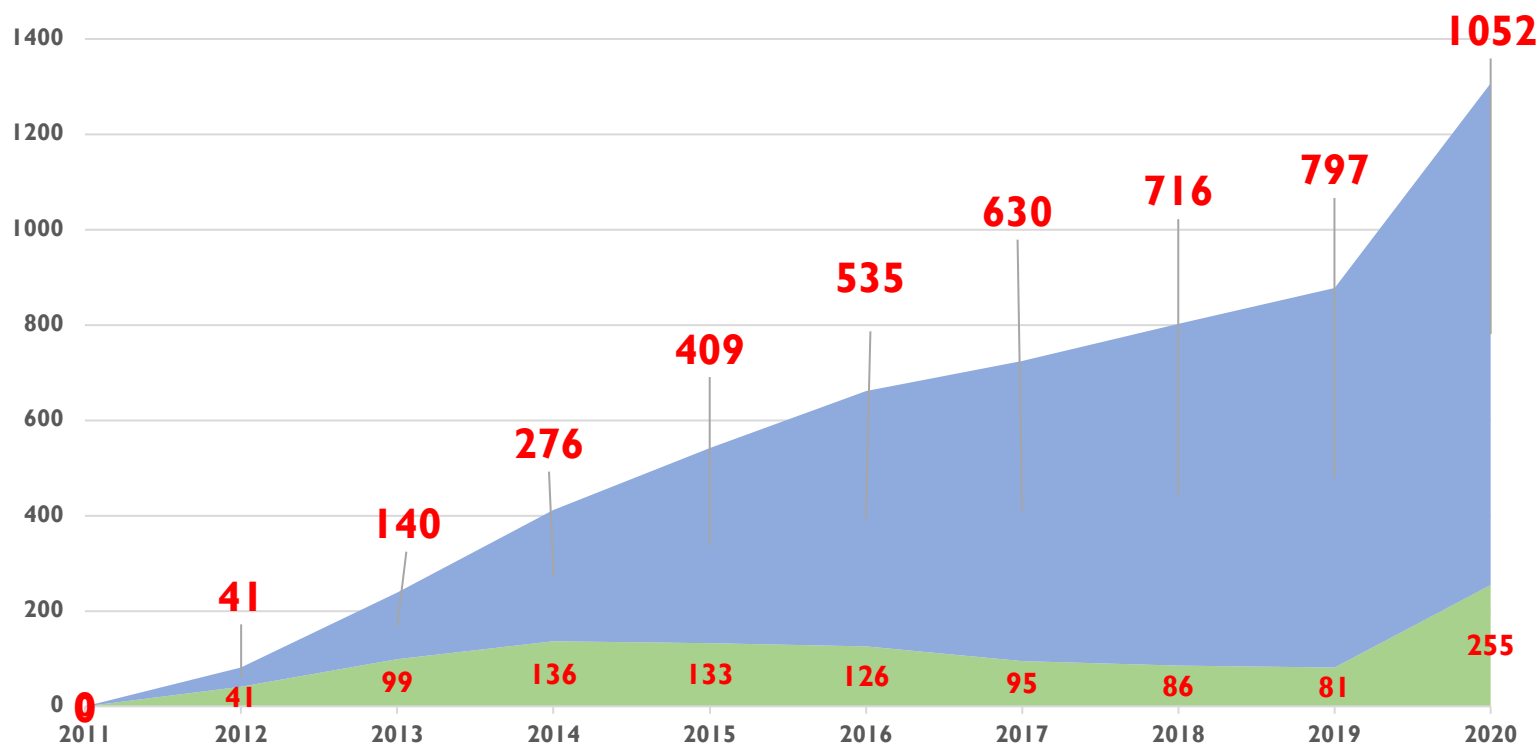






# GeoCache Use

Cumulative Hits



#caches 2      4      7      7      9      9      9      10      10      14



Q&A

?



# Support Your Town Land Trust

We hope to see you on the trails

Support your town Land Trust's operating expenses through your Membership support and spreading the word for others to do the same

Thank You for attending today



# Hopkinton Area Land Trust

2019 Annual Meeting

